

Changed Jul 19, 2024 12:28

Reviewed Jul 19, 2024 12:28

Erudus ID 1637654ab9f844e3a03c10ff8e6cda66

Version 6.1

Food Connections Untopped Mix Muffins

Untopped Mix Muffins (Multipack)

PRODUCT DESCRIPTION

Mixed case comprising of 4 each Double Choc, Blueberry, Cherry, Choc Chip

Brand	Food Connections Ltd
Manufacturer Product Code	FCMFUT003/16
Product Type	Food
Product Category	Cookies, Muffins & Doughnuts
Storage Type	Ambient
Erudus ID	1637654ab9f844e3a03c10ff8e6cda66
Specification Type	Bakery Products



Blueberry

Inner Component GTIN	5027870200120
Manufacturer Component Code	Blueberry
Outer Case GTIN	05027870202605



INGREDIENTS

Ingredient Declaration

WHEAT flour [with added calcium, iron, niacin & thiamine], Sugar, Rapeseed oil, Water, Humectants: Glycerine & Glucose syrup (Glucose syrup, Water, Acidity regulator: E260), Blueberries (4%), Whole dried **EGG**, **WHEAT** starch, Skimmed **MILK** powder, Raising agents: Sodium acid pyrophosphate & Potassium bicarbonate, Dextrose Monohydrate, Pregelatinised Maize Starch, Whey powder [from **MILK**], Rice Starch, Preservative: Potassium sorbate, Emulsifiers: Polyglycerol esters of fatty acids, Mono- & di-glycerides of fatty acids & Sodium stearoyl-2 lactylate, Salt, Stabiliser: Xanthan gum, Natural flavourings.

ALLERGENS

Product Contains:

Celery/Celeriac	No	Mustard	No
Cereals Containing Gluten	Yes	Nuts (Tree)	May Contain
Barley	May Contain	Almond nuts	May Contain
Oats	May Contain	Brazil nuts	May Contain
Rye	May Contain	Cashew nuts	May Contain
Wheat (including Spelt and Khorasan)	Yes	Hazelnuts	May Contain
Crustacea	No	Macadamia (Queensland) nuts	May Contain
Eggs	Yes	Pecan nuts	May Contain
Fish	No	Pistachio nuts	May Contain
Lupin	No	Walnuts	May Contain
Milk	Yes	Peanuts	No
Molluscs	No	Sesame Seeds	No
		Soybeans	May Contain
		Sulphur Dioxide and Sulphites	No

Risk Source:

Barley (Risk Source)	Factory	Oats (Risk Source)	Factory
Rye (Risk Source)	Factory	Tree Nuts (Risk Source)	Factory
Almond nuts (Risk Source)	Factory	Brazil nuts (Risk Source)	Factory
Cashew nuts (Risk Source)	Factory	Hazelnuts (Risk Source)	Factory
Macadamia nuts (Risk Source)	Factory	Pecan nuts (Risk Source)	Factory
Pistachio nuts (Risk Source)	Factory	Walnuts (Risk Source)	Factory
Soybeans (Risk Source)	Factory		

Allergen Statement On Pack

Allergens, including cereals containing gluten, are shown in the ingredients list in BOLD CAPITALS. May contain traces of other cereals containing gluten, soya and nuts as this product was made in premises where these ingredients are used.

SUPPLEMENTARY
INGREDIENT
INFORMATION

Palm Oil	No
Hydrogenated Vegetable Oil/Fat	No
GM Protein/DNA	No

ADDITIVES

Product Contains:

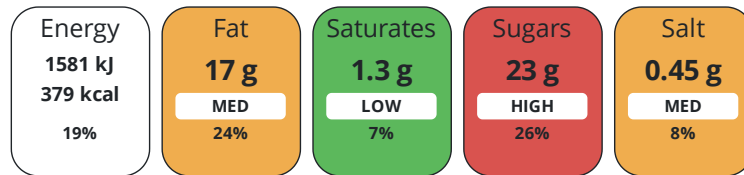
Artificial Preservatives	Yes
Vegetarian Diet	Suitable for
Kosher Diet	No

DIET
SUITABILITY

Vegan Diet	No
Halal Diet	Suitable for

NUTRITIONAL
INFORMATION

Each 100g/ml portion contains:



of your reference intake.

Typical values per 100g/ml : Energy 379kcal / 1581kJ

Nutrient	per 100g	RI per 100g	per 92g serving	RI per 92g serving
Energy (kJ)	1581 kJ	19%	1454.5 kJ	17%
Energy (kcal)	379 kcal	19%	348.7 kcal	17%
Fat	17 g	24%	15.6 g	22%
of which Saturates	1.3 g	7%	1.2 g	6%
Carbohydrate	52 g	20%	47.8 g	18%
of which Sugars	23 g	26%	21.2 g	24%
Fibre	1 g		0.9 g	
Protein	2.6 g	5%	2.4 g	5%
Salt	0.45 g	8%	0.4 g	7%

Serving Size 92 g

SUPPLEMENTARY
NUTRITIONAL
INFORMATION

HFSS (HIGH IN
FAT, SALT AND
SUGAR)

HFSS Status	No
--------------------	----

HANDLING &
STORAGE
INFORMATION

Directions For Use

Ready to eat. Consume on opening.

Storage Instructions

Store in cool, dry conditions. Keep out of direct sunlight and away from sources of heat. Not suitable for refrigeration or freezing.

Shelf Life from Time of Production 119 Days

ACCREDITATIONS/
CERTIFICATIONS/
ASSURANCE
SCHEMES
ORIGIN

IFS Food Standard

Roundtable of Sustainable Palm Oil (RSPO)

Other Accreditation

Product Country of Origin/Place of United Kingdom

Provenance

Standards Testing

PRODUCT
CHARACTERISTICS

Do you undertake trend analysis of microbiological results? Yes

Is shelf life testing undertaken? Yes

Microbiological Standards

Organism	Description	Frequency	Target	Maximum	Sample (g or ml)
E. Coli (cfu/g or ml)		Occasionally	<10	10	1
Listeria SPP (cfu/g or ml)		Occasionally	<0	0	25
Staphylococcus Aureus (cfu/g or ml)		Occasionally	<20	20	1
Total Viable Count (TVC) (cfu/g or ml)		Occasionally	<100	1000	1
Salmonella (cfu/g or ml)		Occasionally	<0	0	25
Yeast (cfu/g or ml)		Occasionally	<50	250	1
Moulds (cfu/g or ml)		Occasionally	<50	250	1

Analytical Standards

Test	Description	Frequency	Target	Range	Sample (g or ml)
Moisture (%)		Occasionally	<23	18 to 30	1

HAZARD CONTROLS

Metal Detection Yes

CONFIGURATION

Case Configuration

Inner Pack Configuration

Total Quantity of Inner Components in 16 Units

Outer Case

Is the Outer Case Splittable? No

PRODUCT
WEIGHTS

Inner Component

Variable Weight Consumer Item Yes

e mark Yes

Outer Case

Outer Case Gross Weight 1.71 kg

Outer Case Net Weight 1.47 kg

PRODUCT DIMENSIONS

Inner Component	
Inner Component Depth	80 mm
Inner Component Width	80 mm
Inner Component Height	60 mm
Outer Case	
Outer Case Depth	407 mm
Outer Case Width	373 mm
Outer Case Height	75 mm

PALLET INFORMATION

Quantity of Cases Per Pallet Layer	6 Cases	Pallet Height	1.6 MTR
Quantity of Layers Per Pallet	20 Layers	Pallet Gross Weight	228.93 kg
Quantity of Cases Per Pallet	120 Cases		

PACKAGING

Inner Component Packaging						
Type	Materials	Weight	Recycled Plastic %	Recyclable	Returnable	Composite
Film	Plastic	1 g	- %			
Film	Paper/Cardboard	1 g	- %			

Outer Case Packaging						
Type	Materials	Weight	Recycled Plastic %	Recyclable	Returnable	Composite
Case	Plastic	21 g	- %			
Case	Paper/Cardboard	226 g	- %			

Transport Packaging						
Type	Materials	Weight	Recycled Plastic %	Recyclable	Returnable	Composite
Other	Plastic	555 g	- %			
Other	Paper/Cardboard	2100 g	- %			
Other	Wood	20000 g	- %			

OTHER INFORMATION

Intrastat/Taric Code	1905	Value Added Tax Rate	No VAT
Commodity Code	1905907000		

Manufacturer Comments

Minimum order quantities to be agreed with Food Connections

Double Choc Flavour

Inner Component GTIN	5027870200052
Manufacturer Component Code	Double Choc Flavour
Outer Case GTIN	05027870202605



INGREDIENTS

Ingredient Declaration

Sugar, **WHEAT** flour [with calcium, iron, niacin & thiamine], Water, Rapeseed oil, Humectants: Glycerine & Glucose syrup. (Glucose syrup, Water, Acidity regulator: E260.), Fat reduced cocoa powder (4%), Chocolate flavour chips (4%)(Sugar, Vegetable fat (Palm Oil), Fat reduced cocoa powder, Emulsifiers: **SOYA** lecithin & Sorbitan tristearate, Natural Flavouring.), **WHEAT** starch, Skimmed **MILK** powder, Whole dried **EGG**, Raising agents: Sodium acid pyrophosphate & Potassium bicarbonate. Dextrose monohydrate, Whey powder [from **MILK**], Preservative: Potassium sorbate. Salt, Stabiliser: Xanthan gum.

ALLERGENS

Product Contains:

Celery/Celery	No	Mustard	No
Cereals Containing Gluten	Yes	Nuts (Tree)	May Contain
Barley	May Contain	Almond nuts	May Contain
Oats	May Contain	Brazil nuts	May Contain
Rye	May Contain	Cashew nuts	May Contain
Wheat (including Spelt and Khorasan)	Yes	Hazelnuts	May Contain
Crustacea	No	Macadamia (Queensland) nuts	May Contain
Eggs	Yes	Pecan nuts	May Contain
Fish	No	Pistachio nuts	May Contain
Lupin	No	Walnuts	May Contain
Milk	Yes	Peanuts	No
Molluscs	No	Sesame Seeds	No
		Soybeans	Yes
		Sulphur Dioxide and Sulphites	No

Risk Source:

Barley (Risk Source)	Factory	Oats (Risk Source)	Factory
Rye (Risk Source)	Factory	Tree Nuts (Risk Source)	Factory
Almond nuts (Risk Source)	Factory	Brazil nuts (Risk Source)	Factory
Cashew nuts (Risk Source)	Factory	Hazelnuts (Risk Source)	Factory
Macadamia nuts (Risk Source)	Factory	Pecan nuts (Risk Source)	Factory
Pistachio nuts (Risk Source)	Factory	Walnuts (Risk Source)	Factory

Allergen Statement On Pack

Allergens, including cereals containing gluten, are shown in the ingredients list in BOLD CAPITALS. May contain traces of other cereals containing gluten, soya and nuts as this product was made in premises where these ingredients are used.

SUPPLEMENTARY INGREDIENT INFORMATION

Palm Oil	Yes
Hydrogenated Vegetable Oil/Fat	No
GM Protein/DNA	No

ADDITIVES

Product Contains:

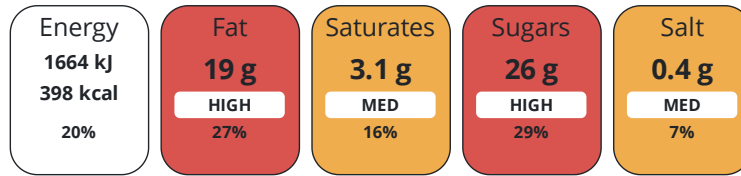
Artificial Preservatives	Yes
Vegetarian Diet	Suitable for
Kosher Diet	No

DIET SUITABILITY

Vegan Diet	No
Halal Diet	Suitable for

NUTRITIONAL INFORMATION

Each 100g/ml portion contains:



of your reference intake.

Typical values per 100g/ml : Energy 398kcal / 1664kJ

Nutrient	per 100g	RI per 100g	per 92g serving	RI per 92g serving
Energy (kJ)	1664 kJ	20%	1530.9 kJ	18%
Energy (kcal)	398 kcal	20%	366.2 kcal	18%
Fat	19 g	27%	17.5 g	25%
of which Saturates	3.1 g	16%	2.9 g	15%
Carbohydrate	52 g	20%	47.8 g	18%
of which Sugars	26 g	29%	23.9 g	27%
Fibre	2 g		1.8 g	
Protein	3.5 g	7%	3.2 g	6%
Salt	0.4 g	7%	0.4 g	7%
Serving Size	92 g			

SUPPLEMENTARY NUTRITIONAL INFORMATION

HFSS (HIGH IN FAT, SALT AND SUGAR)
HANDLING & STORAGE INFORMATION

HFSS Status No

Directions For Use

Ready to eat snack. Consume on opening.

Storage Instructions

Store in cool, dry conditions. Keep out of direct sunlight and away from sources of heat. Not suitable for refrigeration or freezing.

Shelf Life from Time of Production 119 Days

ACCREDITATIONS/ CERTIFICATIONS/ ASSURANCE SCHEMES ORIGIN

IFS Food Standard

Roundtable of Sustainable Palm Oil (RSPO)

Other Accreditation

Product Country of Origin/Place of United Kingdom

Provenance

Standards Testing

PRODUCT CHARACTERISTICS

Do you undertake trend analysis of microbiological results? Yes

Is shelf life testing undertaken? Yes

Microbiological Standards

Organism	Description	Frequency	Target	Maximum	Sample (g or ml)
E. Coli (cfu/g or ml)		Occasionally	<10	10	1
Listeria Monocytogenes (cfu/g or ml)		Occasionally	<0	0	25
Staphylococcus Aureus (cfu/g or ml)		Occasionally	<20	20	1

Organism	Description	Frequency	Target	Maximum	Sample (g or ml)
Total Viable Count (TVC) (cfu/g or ml)		Occasionally	<100	1000	1
Salmonella (cfu/g or ml)		Occasionally	<0	0	25
Yeast (cfu/g or ml)		Occasionally	<50	250	1
Moulds (cfu/g or ml)		Occasionally	<50	250	1

Analytical Standards

Test	Description	Frequency	Target	Range	Sample (g or ml)
Moisture (%)		Occasionally	<23	18 to 30	1

HAZARD CONTROLS

Metal Detection	Yes
------------------------	-----

CONFIGURATION

Case Configuration	Inner Pack Configuration
--------------------	--------------------------

Total Quantity of Inner Components in	16 Units
--	----------

Outer Case

Is the Outer Case Splittable?	No
--------------------------------------	----

PRODUCT WEIGHTS

Inner Component

Variable Weight Consumer Item	Yes
--------------------------------------	-----

e mark	Yes
---------------	-----

Outer Case

Outer Case Gross Weight	1.71 kg
--------------------------------	---------

Outer Case Net Weight	1.47 kg
------------------------------	---------

PRODUCT DIMENSIONS

Inner Component

Inner Component Depth	80 mm
------------------------------	-------

Inner Component Width	80 mm
------------------------------	-------

Inner Component Height	60 mm
-------------------------------	-------

Outer Case

Outer Case Depth	407 mm
-------------------------	--------

Outer Case Width	373 mm
-------------------------	--------

Outer Case Height	75 mm
--------------------------	-------

PALLET INFORMATION

Quantity of Cases Per Pallet Layer	6 Cases	Pallet Height	1.6 MTR
---	---------	----------------------	---------

Quantity of Layers Per Pallet	20 Layers	Pallet Gross Weight	228.93 kg
--------------------------------------	-----------	----------------------------	-----------

Quantity of Cases Per Pallet	120 Cases
-------------------------------------	-----------

PACKAGING

Inner Component Packaging

Type	Materials	Weight	Recycled Plastic %	Recyclable	Returnable	Composite
Film	Plastic	1 g	- %			
Film	Paper/Cardboard	1 g	- %			

Outer Case Packaging

Type	Materials	Weight	Recycled Plastic %	Recyclable	Returnable	Composite
Case	Plastic	21 g	- %			
Case	Paper/Cardboard	226 g	- %			

Transport Packaging

Type	Materials	Weight	Recycled Plastic %	Recyclable	Returnable	Composite
Other	Plastic	555 g	- %			
Other	Paper/Cardboard	2100 g	- %			
Other	Wood	20000 g	- %			

OTHER INFORMATION

Intrastat/Taric Code	1905	Value Added Tax Rate	No VAT
Commodity Code	1905907000		

Manufacturer Comments

Minimum order quantities to be agreed with Food Connections

Cherry

Inner Component GTIN	5027870200038
Manufacturer Component Code	Cherry
Outer Case GTIN	05027870202605



INGREDIENTS

Ingredient Declaration

WHEAT flour [with added calcium, iron, niacin & thiamine], Sugar, Water, Rapeseed oil, Humectants: Glycerine & Glucose syrup (Glucose syrup, Water, Acidity regulator: E260), Glace cherries (6%) (Cherries, Glucose - fructose syrup, Sugar, Acidity Regulator: Citric acid, Preservative: Potassium sorbate, Colour: Erythrosine), Whole dried **EGG**, **WHEAT** starch, Skimmed **MILK** powder, Raising agents: Sodium acid pyrophosphate & Potassium bicarbonate, Dextrose Monohydrate, Pregelatinised Maize Starch, Whey powder [from **MILK**], Rice Starch, Preservative: Potassium sorbate, Emulsifiers: Polyglycerol esters of fatty acids, Mono- & di-glycerides of fatty acids & Sodium stearoyl-2 lactylate, Salt, Stabiliser: Xanthan gum, Natural flavouring.

ALLERGENS

Product Contains:

Celery/Celериac	No	Mustard	No
Cereals Containing Gluten	Yes	Nuts (Tree)	May Contain
Barley	May Contain	Almond nuts	May Contain
Oats	May Contain	Brazil nuts	May Contain
Rye	May Contain	Cashew nuts	May Contain
Wheat (including Spelt and Khorasan)	Yes	Hazelnuts	May Contain
Crustacea	No	Macadamia (Queensland) nuts	May Contain
Eggs	Yes	Pecan nuts	May Contain
Fish	No	Pistachio nuts	May Contain
Lupin	No	Walnuts	May Contain
Milk	Yes	Peanuts	No
Molluscs	No	Sesame Seeds	No
		Soybeans	May Contain
		Sulphur Dioxide and Sulphites	No

Risk Source:

Barley (Risk Source)	Factory	Oats (Risk Source)	Factory
Rye (Risk Source)	Factory	Tree Nuts (Risk Source)	Factory
Almond nuts (Risk Source)	Factory	Brazil nuts (Risk Source)	Factory
Cashew nuts (Risk Source)	Factory	Hazelnuts (Risk Source)	Factory
Macadamia nuts (Risk Source)	Factory	Pecan nuts (Risk Source)	Factory
Pistachio nuts (Risk Source)	Factory	Walnuts (Risk Source)	Factory
Soybeans (Risk Source)	Factory		

Allergen Statement On Pack

Allergens, including cereals containing gluten, are shown in the ingredients list in BOLD CAPITALS. May contain traces of other cereals containing gluten, soya and nuts as this product was made in premises where these ingredients are used.

SUPPLEMENTARY INGREDIENT INFORMATION

Palm Oil	No
Hydrogenated Vegetable Oil/Fat	No
GM Protein/DNA	No

ADDITIVES

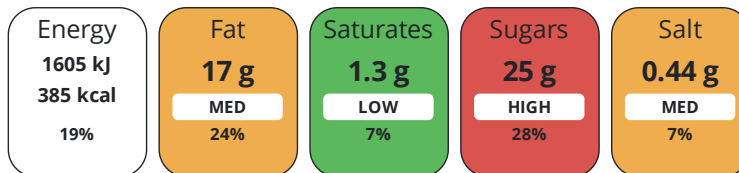
Product Contains:

Artificial Colours	Yes	Artificial Preservatives	Yes
Vegan Diet	No	Vegetarian Diet	Suitable for
Halal Diet	Suitable for	Kosher Diet	No

DIET SUITABILITY

NUTRITIONAL INFORMATION

Each 100g/ml portion contains:



of your reference intake.

Typical values per 100g/ml : Energy 385kcal / 1605kj

Nutrient	per 100g	RI per 100g	per 92g serving	RI per 92g serving
Energy (kJ)	1605 kJ	19%	1476.6 kJ	18%
Energy (kcal)	385 kcal	19%	354.2 kcal	18%
Fat	17 g	24%	15.6 g	22%
of which Saturates	1.3 g	7%	1.2 g	6%
Carbohydrate	55 g	21%	50.6 g	19%
of which Sugars	25 g	28%	23 g	26%
Fibre	0.8 g		0.7 g	
Protein	2.6 g	5%	2.4 g	5%
Salt	0.44 g	7%	0.4 g	7%

Serving Size 92 g

SUPPLEMENTARY NUTRITIONAL INFORMATION

HFSS (HIGH IN FAT, SALT AND SUGAR)
HANDLING & STORAGE INFORMATION

HFSS Status No

Directions For Use

Ready to eat snack. Consume on opening.

Storage Instructions

Store in cool, dry conditions. Keep out of direct sunlight and away from sources of heat. Not suitable for refrigeration or freezing.

Shelf Life from Time of Production 119 Days

ACCREDITATIONS/ CERTIFICATIONS/ ASSURANCE SCHEMES ORIGIN

IFS Food Standard

Roundtable of Sustainable Palm Oil (RSPO)

Other Accreditation

Product Country of Origin/Place of United Kingdom

Provenance

Standards Testing

PRODUCT CHARACTERISTICS

Do you undertake trend analysis of microbiological results? Yes

Is shelf life testing undertaken? Yes

Microbiological Standards

Organism	Description	Frequency	Target	Maximum	Sample (g or ml)
E. Coli (cfu/g or ml)		Occasionally	<10	10	1
Listeria SPP (cfu/g or ml)		Occasionally	<0	0	25
Staphylococcus Aureus (cfu/g or ml)		Occasionally	<20	20	1
Total Viable Count (TVC) (cfu/g or ml)		Occasionally	<100	1000	1

Organism	Description	Frequency	Target	Maximum	Sample (g or ml)
Salmonella (cfu/g or ml)		Occasionally	<0	0	25
Yeast (cfu/g or ml)		Occasionally	<50	250	1
Moulds (cfu/g or ml)		Occasionally	<50	250	1

Analytical Standards

Test	Description	Frequency	Target	Range	Sample (g or ml)
Moisture (%)		Occasionally	<23	18 to 30	1

HAZARD CONTROLS

Metal Detection	Yes
------------------------	-----

CONFIGURATION

Case Configuration	Inner Pack Configuration
--------------------	--------------------------

Total Quantity of Inner Components in	16 Units
--	----------

Outer Case

Is the Outer Case Splittable?	No
--------------------------------------	----

PRODUCT WEIGHTS

Inner Component

Variable Weight Consumer Item	Yes
--------------------------------------	-----

e mark	Yes
---------------	-----

Outer Case

Outer Case Gross Weight	1.71 kg
--------------------------------	---------

Outer Case Net Weight	1.47 kg
------------------------------	---------

PRODUCT DIMENSIONS

Inner Component

Inner Component Depth	80 mm
------------------------------	-------

Inner Component Width	80 mm
------------------------------	-------

Inner Component Height	60 mm
-------------------------------	-------

Outer Case

Outer Case Depth	407 mm
-------------------------	--------

Outer Case Width	373 mm
-------------------------	--------

Outer Case Height	75 mm
--------------------------	-------

PALLET INFORMATION

Quantity of Cases Per Pallet Layer	6 Cases	Pallet Height	1.6 MTR
---	---------	----------------------	---------

Quantity of Layers Per Pallet	20 Layers	Pallet Gross Weight	228.93 kg
--------------------------------------	-----------	----------------------------	-----------

Quantity of Cases Per Pallet	120 Cases
-------------------------------------	-----------

PACKAGING

Inner Component Packaging

Type	Materials	Weight	Recycled Plastic %	Recyclable	Returnable	Composite
------	-----------	--------	--------------------	------------	------------	-----------

Film	Plastic	1 g	- %			
------	---------	-----	-----	--	--	--

Film	Paper/Cardboard	1 g	- %			
------	-----------------	-----	-----	--	--	--

Outer Case Packaging

Type	Materials	Weight	Recycled Plastic %	Recyclable	Returnable	Composite
------	-----------	--------	--------------------	------------	------------	-----------

Case	Plastic	21 g	- %			
------	---------	------	-----	--	--	--

Case	Paper/Cardboard	226 g	- %			
------	-----------------	-------	-----	--	--	--

Transport Packaging

Type	Materials	Weight	Recycled Plastic %	Recyclable	Returnable	Composite
Other	Plastic	555 g	- %			
Other	Paper/Cardboard	2100 g	- %			
Other	Wood	20000 g	- %			

OTHER
INFORMATION

Intrastat/Taric Code	1905	Value Added Tax Rate	No VAT
Commodity Code	1905907000		

Manufacturer Comments

Minimum order quantities to be agreed with Food Connections

Chocolate Flavour Chip

Inner Component GTIN 5027870200045

Manufacturer Component Code Chocolate Flav Chip

Outer Case GTIN 05027870202605



INGREDIENTS

Ingredient Declaration

WHEAT flour [with added calcium, iron, niacin & thiamine], Sugar, Water, Rapeseed oil, Humectants: Glycerine & Glucose syrup. (Glucose syrup, Water, Acidity regulator: E260.), Chocolate flavour chips (4%)(Sugar, Vegetable fat (Palm Oil), Fat reduced cocoa powder, Emulsifier: SOYA lecithin & Sorbitan tristearate, Natural Flavouring.), Whole dried EGG, WHEAT starch, Skimmed MILK powder, Raising agents: Sodium acid pyrophosphate & Potassium bicarbonate. Dextrose Monohydrate, Pregelatinised Maize Starch, Whey powder [from MILK], Rice Starch, Preservative: Potassium sorbate. Emulsifiers: Polyglycerol esters of fatty acids, Mono- & di-glycerides of fatty acids & Sodium stearyl-2 lactylate. Salt, Stabiliser: Xanthan gum. Natural flavouring

ALLERGENS

Product Contains:

Celery/Celery	No	Mustard	No
Cereals Containing Gluten	Yes	Nuts (Tree)	May Contain
Barley	May Contain	Almond nuts	May Contain
Oats	May Contain	Brazil nuts	May Contain
Rye	May Contain	Cashew nuts	May Contain
Wheat (including Spelt and Khorasan)	Yes	Hazelnuts	May Contain
Crustacea	No	Macadamia (Queensland) nuts	May Contain
Eggs	Yes	Pecan nuts	May Contain
Fish	No	Pistachio nuts	May Contain
Lupin	No	Walnuts	May Contain
Milk	Yes	Peanuts	No
Molluscs	No	Sesame Seeds	No
		Soybeans	Yes
		Sulphur Dioxide and Sulphites	No

Risk Source:

Barley (Risk Source)	Factory	Oats (Risk Source)	Factory
Rye (Risk Source)	Factory	Tree Nuts (Risk Source)	Factory
Almond nuts (Risk Source)	Factory	Brazil nuts (Risk Source)	Factory
Cashew nuts (Risk Source)	Factory	Hazelnuts (Risk Source)	Factory
Macadamia nuts (Risk Source)	Factory	Pecan nuts (Risk Source)	Factory
Pistachio nuts (Risk Source)	Factory	Walnuts (Risk Source)	Factory

Allergen Statement On Pack

Allergens, including cereals containing gluten, are shown in the ingredients list in BOLD CAPITALS. May contain traces of other cereals containing gluten, soya and nuts as this product was made in premises where these ingredients are used.

SUPPLEMENTARY INGREDIENT INFORMATION

Palm Oil	Yes
Hydrogenated Vegetable Oil/Fat	No
GM Protein/DNA	No

ADDITIVES

Product Contains:

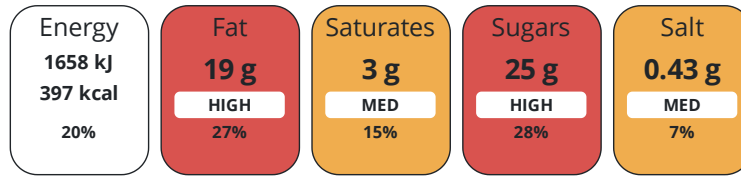
Artificial Preservatives	Yes
Vegetarian Diet	Suitable for
Kosher Diet	No

DIET SUITABILITY

Vegan Diet	No
Halal Diet	Suitable for

NUTRITIONAL
INFORMATION

Each 100g/ml portion contains:



of your reference intake.

Typical values per 100g/ml : Energy 397kcal / 1658kJ

Nutrient	per 100g	RI per 100g	per 92g serving	RI per 92g serving
Energy (kJ)	1658 kJ	20%	1525.4 kJ	18%
Energy (kcal)	397 kcal	20%	365.2 kcal	18%
Fat	19 g	27%	17.5 g	25%
of which Saturates	3 g	15%	2.8 g	14%
Carbohydrate	54 g	21%	49.7 g	19%
of which Sugars	25 g	28%	23 g	26%
Fibre	0.8 g		0.7 g	
Protein	2.7 g	5%	2.5 g	5%
Salt	0.43 g	7%	0.4 g	7%
Serving Size	92 g			

SUPPLEMENTARY
NUTRITIONAL
INFORMATION

HFSS (HIGH IN
FAT, SALT AND
SUGAR)
HANDLING &
STORAGE
INFORMATION

HFSS Status No

Directions For Use

Ready to eat snack. Consume on opening.

Storage Instructions

Store in cool, dry conditions. Keep out of direct sunlight and away from sources of heat. Not suitable for refrigeration or freezing.

Shelf Life from Time of Production 119 Days

ACCREDITATIONS/
CERTIFICATIONS/
ASSURANCE
SCHEMES
ORIGIN

IFS Food Standard

Roundtable of Sustainable Palm Oil (RSPO)

Other Accreditation

Product Country of Origin/Place of United Kingdom

Provenance

Standards Testing

PRODUCT
CHARACTERISTICS

Do you undertake trend analysis of microbiological results? Yes

Is shelf life testing undertaken? Yes

Microbiological Standards

Organism	Description	Frequency	Target	Maximum	Sample (g or ml)
E. Coli (cfu/g or ml)		Occasionally	<10	10	1
Listeria SPP (cfu/g or ml)		Occasionally	<0	0	25
Staphylococcus Aureus (cfu/g or ml)		Occasionally	<20	20	1
Total Viable Count (TVC) (cfu/g or ml)		Occasionally	<100	1000	1

Organism	Description	Frequency	Target	Maximum	Sample (g or ml)
Salmonella (cfu/g or ml)		Occasionally	<0	0	25
Yeast (cfu/g or ml)		Occasionally	<50	250	1
Moulds (cfu/g or ml)		Occasionally	<50	250	1

Analytical Standards

Test	Description	Frequency	Target	Range	Sample (g or ml)
Moisture (%)		Occasionally	<23	18 to 30	1

HAZARD CONTROLS

Metal Detection	Yes
------------------------	-----

CONFIGURATION

Case Configuration	Inner Pack Configuration
--------------------	--------------------------

Total Quantity of Inner Components in	16 Units
--	----------

Outer Case

Is the Outer Case Splittable?	No
--------------------------------------	----

PRODUCT WEIGHTS

Inner Component

Variable Weight Consumer Item	Yes
--------------------------------------	-----

e mark	Yes
---------------	-----

Outer Case

Outer Case Gross Weight	1.71 kg
--------------------------------	---------

Outer Case Net Weight	1.47 kg
------------------------------	---------

PRODUCT DIMENSIONS

Inner Component

Inner Component Depth	80 mm
------------------------------	-------

Inner Component Width	80 mm
------------------------------	-------

Inner Component Height	60 mm
-------------------------------	-------

Outer Case

Outer Case Depth	407 mm
-------------------------	--------

Outer Case Width	373 mm
-------------------------	--------

Outer Case Height	75 mm
--------------------------	-------

PALLET INFORMATION

Quantity of Cases Per Pallet Layer	6 Cases	Pallet Height	1.6 MTR
---	---------	----------------------	---------

Quantity of Layers Per Pallet	20 Layers	Pallet Gross Weight	228.93 kg
--------------------------------------	-----------	----------------------------	-----------

Quantity of Cases Per Pallet	120 Cases
-------------------------------------	-----------

PACKAGING

Inner Component Packaging

Type	Materials	Weight	Recycled Plastic %	Recyclable	Returnable	Composite
------	-----------	--------	--------------------	------------	------------	-----------

Film	Plastic	1 g	- %			
------	---------	-----	-----	--	--	--

Film	Paper/Cardboard	1 g	- %			
------	-----------------	-----	-----	--	--	--

Outer Case Packaging

Type	Materials	Weight	Recycled Plastic %	Recyclable	Returnable	Composite
------	-----------	--------	--------------------	------------	------------	-----------

Case	Plastic	21 g	- %			
------	---------	------	-----	--	--	--

Case	Paper/Cardboard	226 g	- %			
------	-----------------	-------	-----	--	--	--

Transport Packaging

Type	Materials	Weight	Recycled Plastic %	Recyclable	Returnable	Composite
Other	Plastic	555 g	- %			
Other	Paper/Cardboard	2100 g	- %			
Other	Wood	20000 g	- %			

OTHER INFORMATION

Intrastat/Taric Code	1905	Value Added Tax Rate	No VAT
Commodity Code	1905907000		

Manufacturer Comments

Minimum order quantities to be agreed with Food Connections

CONTACT INFORMATION

Address

Food Connections Ltd
 Quorn House, Comet Way
 Hermitage Industrial Estate
 Coalville
 Leicestershire
 LE67 3FS
 United Kingdom

P: (Phone) 01530 830180

Complaints Contact

Gillian Currie
 Technical Manager
 gillian.currie@foodconnections.co.uk

P: (Phone) 01530 830180

Technical Contact

Gillian Currie
 Technical Manager
 gillian.currie@foodconnections.co.uk

P: (Phone) 01530 830180

The information on the [Erudus System](#) has been supplied by the manufacturers of the products and, whilst the owners of the Erudus System take steps to ensure the information is regularly updated, they give no warranty and no guarantee that the information is accurate. Product information and ingredients may change, please always read product labels carefully in addition to using the information provided by Erudus.

We do not accept liability for any inaccuracies or incorrect information contained on this site. Please visit <http://www.erudus.com/terms-and-conditions> for full terms and conditions.